

SHOCKWAVE THERAPY

FAST AND PERMANENT RELIEF FROM PAIN

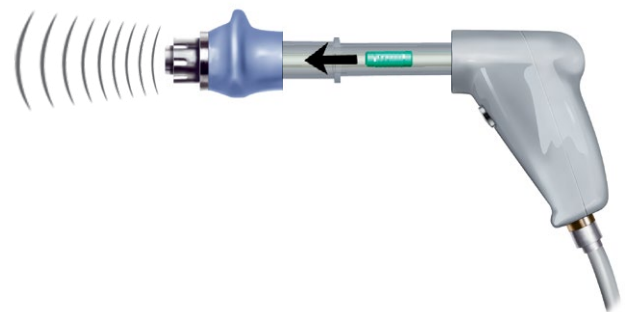
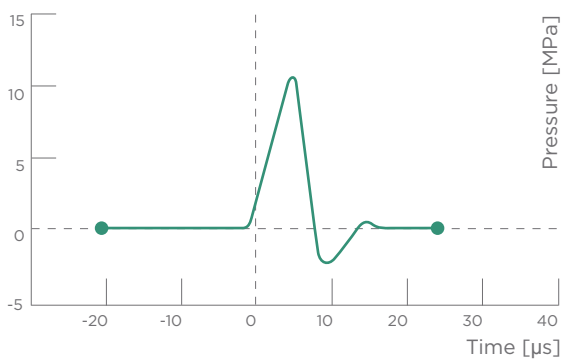
- Unique, non-invasive solution for musculoskeletal pain
- Just three to four treatments needed at weekly intervals
- A therapy session only takes about 10 minutes

FIELDS OF APPLICATION

- Orthopaedics
- Rehabilitation
- Sports medicine

MECHANISM OF ACTION

A shockwave is an acoustic wave which carries high energy to painful spots and myoskeletal tissues with subacute, subchronic and chronic conditions. The energy promotes regenerating and reparative processes of the bones, tendons and other soft tissues.



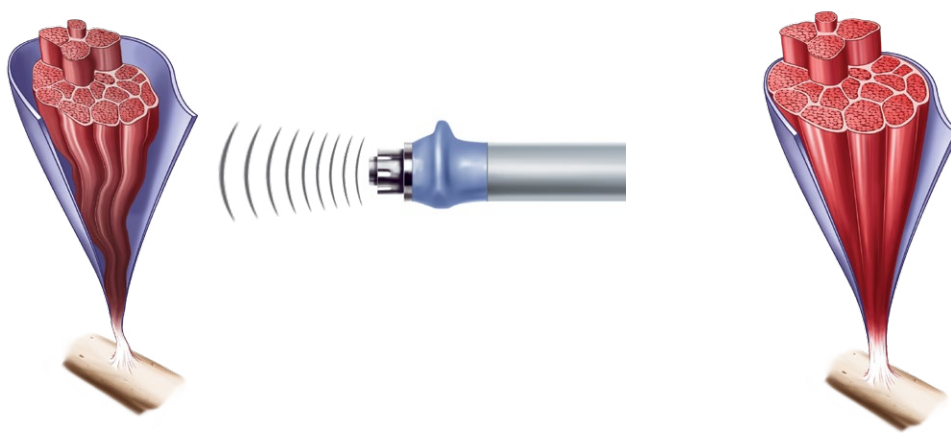
Shockwaves are characterized by jump change in pressure, high amplitude and non-periodicity.

The kinetic energy of the projectile, created by compressed air, is transferred to the transmitter at the end of the applicator.

ANALGESIC EFFECT – ELIMINATION OF PAIN

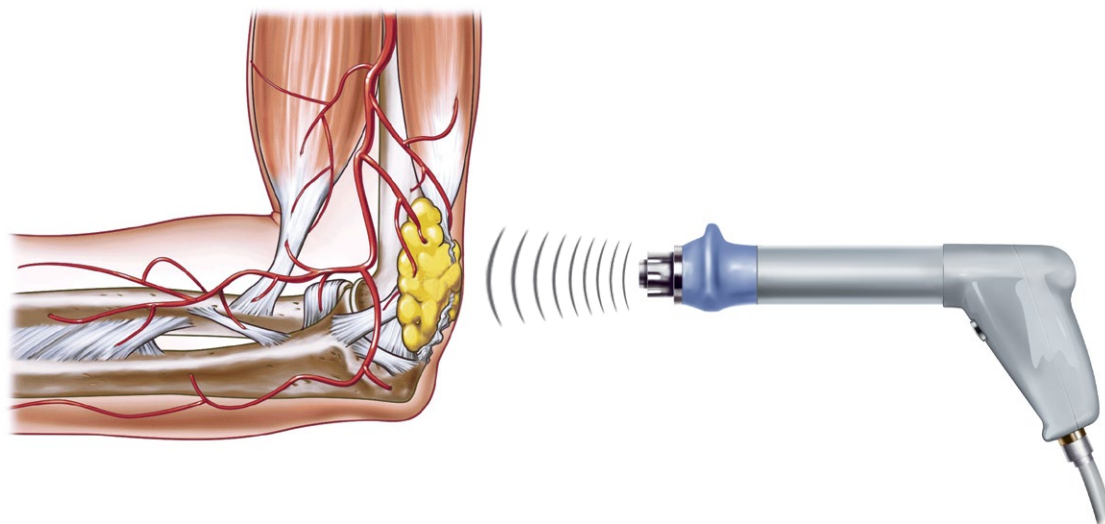
DECREASE OF MUSCLE TENSION, INHIBITION OF SPASMS

Hyperaemia is one of the basic effects of shockwave therapy in the body. It provides better energy supply to hypertonic muscles and their ligamentous structures. Furthermore, it causes the lessening of pathological interactions between actin and myosin. This leads to significant reduction of muscle tension.



ENHANCED DISPERSION OF SUBSTANCE P

The activity of Substance P (a pain mediator and growth factor) leads to the stimulation of afferent nociceptive fibres. It also supports the development of oedema and supports the secretion of histamine. The reduction of its concentration reduces pain in the affected area and decreases the development of oedema.



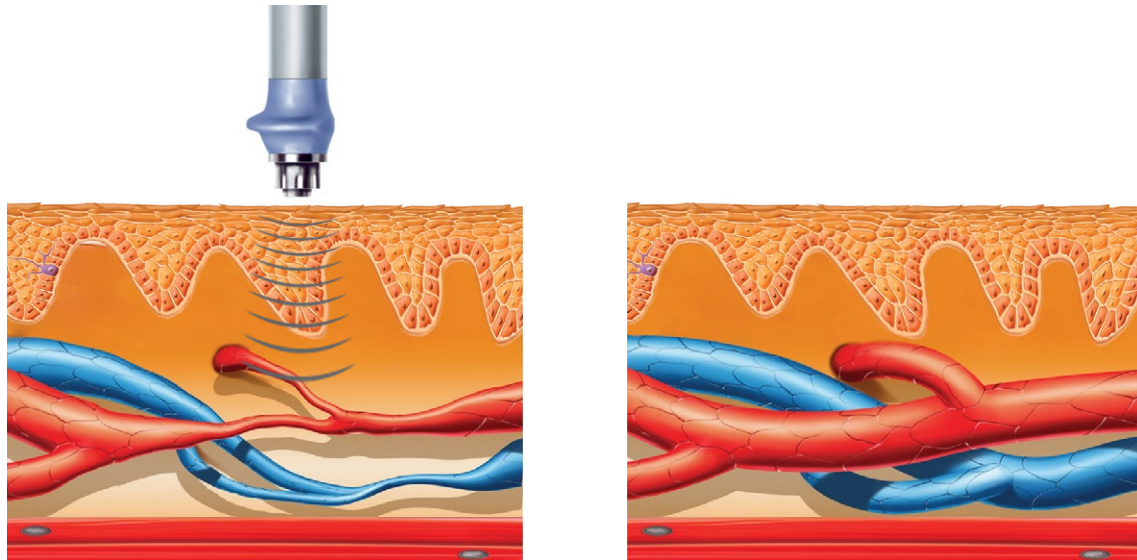
ACCELERATION OF HEALING

INCREASE OF COLLAGEN PRODUCTION

The production of a sufficient amount of collagen is a necessary precondition for the repair processes to the damaged myoskeletal and ligamentous structures.

IMPROVED METABOLISM AND MICROCIRCULATION

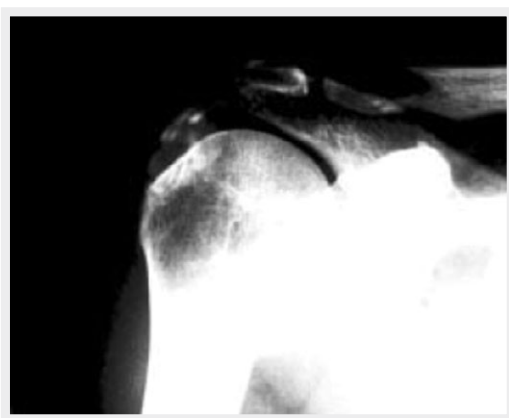
The SWT technology accelerates removal of nociceptive metabolites, increases oxygenation and supplies the damaged tissue with a source of energy. It supports removal of histamine, lactic acid and other irritating agents.



MOBILITY RESTORATION

DISSOLVING OF CALCIFIED FIBROBLASTS

The SWT technology dissolves calcified fibroblasts and starts subsequent biochemical decalcification of primary calcaria or secondary symptoms of arthrosis.



Before shockwave treatment



After 3rd application

MOST COMMON INDICATIONS

- Trigger Points
- Chronic enthesopathies

